

East Deer Township

Westmoreland County

Burrell Township

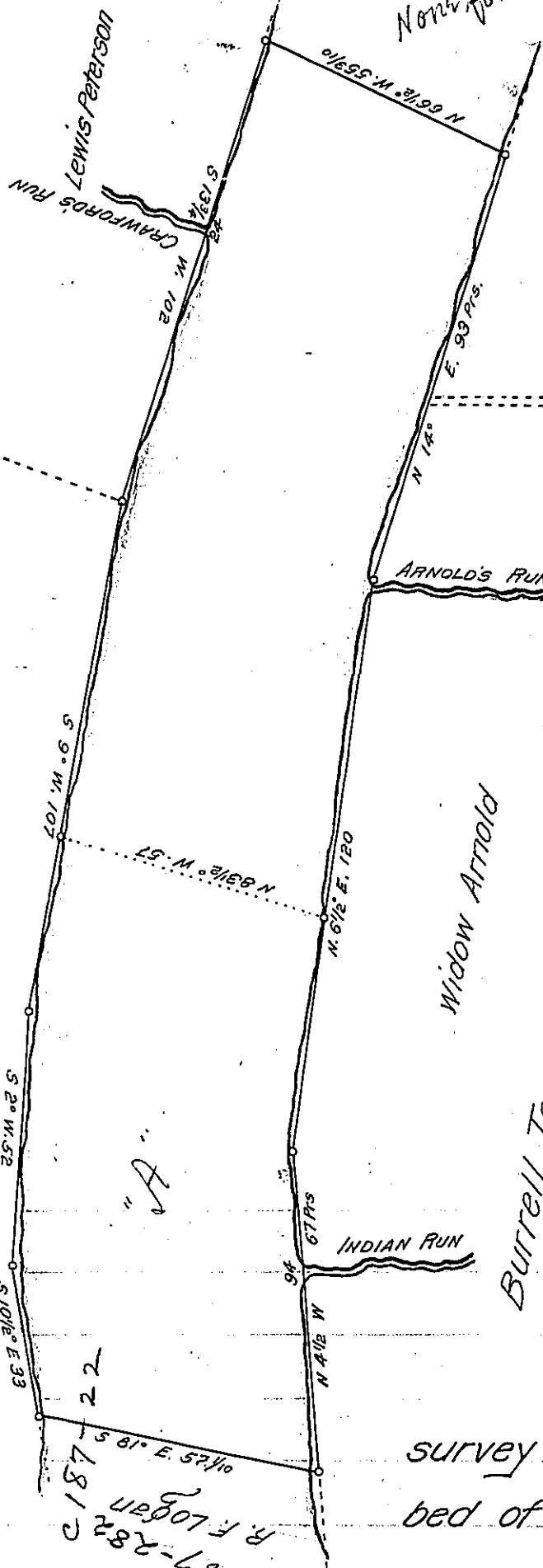
Jas. Hawn

Peter Hite

Widow Arnold

ARNOLD'S RUN

INDIAN RUN



A. Interferes with the Claim of C. S. Eyster = C 187-22

Draught of a
dred acres of the
ny River, Surveyed

survey of One hun-
bed of the Alleghe-
upon a Warrant Grant

to J. T. McCormick, dated May 10, 1864. Situated between the
County of Westmoreland (Burrell township) and East Deer
township, in Allegheny County, Penna. Executed as of the
5th and 6th days of July, A. D. 1864

To

Jas. P. Barr Esq
Surveyor General

E. H. Heasting
C. S.

Harrisburg, Penna.

IN TESTIMONY that the above is a copy of the original remaining on file in
the Department of Internal Affairs of Pennsylvania, made
comformably to an Act of Assembly approved the 16th day of
February 1833, I have hereunto set my hand and caused
the Seal of said Department to be affixed at Harrisburg,
this eighteenth day of January 1907

George P. Brown
Secretary of Internal Affairs.